

APRIL 2024, TIGER TALES

Taku Elementary Kaitlin Tallman, Principal



Taku Mission Statement

Taku will create a safe and welcoming learning environment to support the diverse needs of students where everyone believes they are valued and capable of success.



Principal's Corner, Kaitlin Tallman

Taku families,

WOAH! Our attendance is on the rise!! Shout out to all of our families for working hard to get kids to school every day on time! We have been able to celebrate lots of classes this month with our Spin to Win Prize Wheel. The Traveling Tiger Trophy has been on display in Mrs. Phillips class, Mr. Ferretti's class, Ms.

McMahon's class, Mr. Felton's class, and Mrs. Lopez's class! They have maintained some great attendance percentages! Keep working hard to come to school every day on time.

We are hosting a Taku Chuck E. Cheese night on Friday, 4/12, from 3:00 - 9:00. Taku receives 20% of all purchases. Invite your friends and families to attend and mention Taku when you're there! We hope you can make it!

We are also right in the middle of our AK STAR State Assessment window. Our 3rd, 4th, 5th, & 6th grade students have been doing a fabulous job taking their time, trying their best, and showing what they know. We will finish up most of our testing this week and do makeup testing immediately after.

It's getting lighter and lighter outside, which means students are waking up earlier. Just a reminder, students should not be getting dropped off or come to school before 8:40am. There is no supervision outside prior to this time. If you arrive by car at Taku before 8:40, please stay in the car

until you see staff come outside before releasing your students. We want to ensure student safety each day, and we thank you for your help with this.

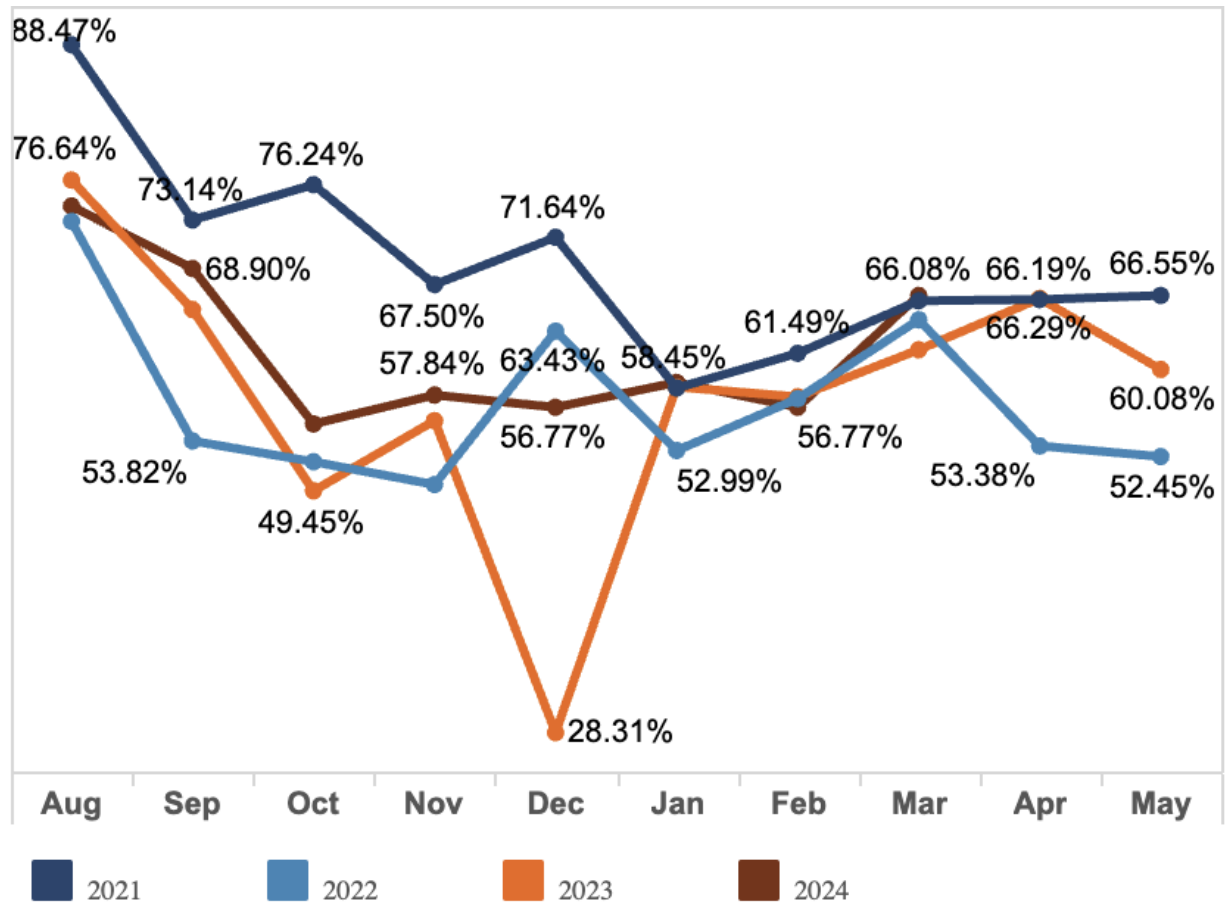
Lastly, I want to celebrate all of our Paraprofessionals at Taku for National Paraprofessional Day. These staff work extremely hard with our students and support in many different ways. Thank you! I also want to recognize our front office staff, Ms. Rachel Ketchum and Ms. Rachel Musselman as we celebrate Office Appreciation Week this month. These ladies do so much behind the scenes for our school, students, staff, and families. We all appreciate everything you do!

If you need assistance with anything, please contact us via email (asktaku@asdk12.org) or by phone (742-5940). We are here to help you. It is an honor to serve the Taku community. If you have any questions, do not hesitate to be in contact.

Kaitlin Tallman,
Taku Principal

Taku Attendance

Attendance for the Last 7 Days	Attendance for the Last 30 Days	Year-to-date Attendance
<u>91.33%</u>	<u>89.70%</u>	<u>89.35%</u>

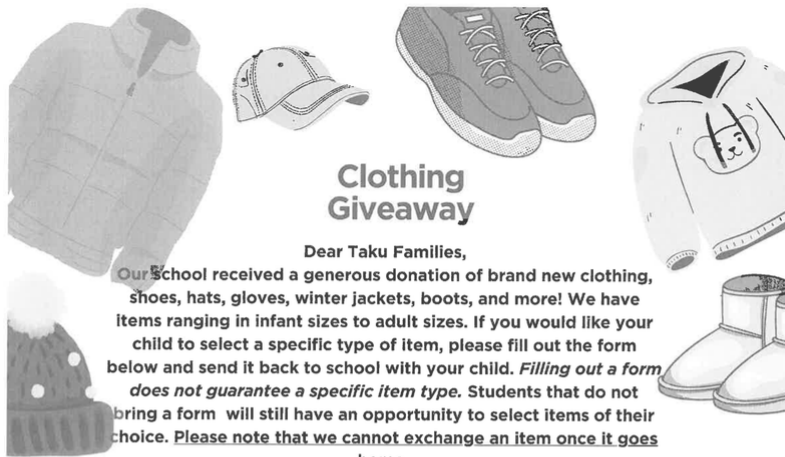


90% Attendance by school for the month of March

Taku Elementary School

66.54%

Clothing Giveaway



Clothing Giveaway

Dear Taku Families,
Our School received a generous donation of brand new clothing, shoes, hats, gloves, winter jackets, boots, and more! We have items ranging in infant sizes to adult sizes. If you would like your child to select a specific type of item, please fill out the form below and send it back to school with your child. *Filling out a form does not guarantee a specific item type.* Students that do not bring a form will still have an opportunity to select items of their choice. Please note that we cannot exchange an item once it goes home.

We are excited about this wonderful opportunity!
-Taku staff

Student Name: _____ Date: _____

Please circle the type of item you would like your child to select.

winter jacket/coat

lighter jacket/coat

winter boots

indoor shoes

hats/gloves

t-shirt

pants

long sleeve shirt

sweater/sweatshirt

Please list preferred size (specify infant, youth, or adult):

Note: If you are selecting winter gear for next year... size up!

Top: _____

Shoes: _____

Bottom: _____

Spirit Week 4/8 - 4/12



Taku's Chuck E. Cheese Fundraising Event

CHUCK E. CHEESE® FUNdraising

Turning Fun into Funds™



**CHUCK E. CHEESE
DONATES
20%
ON THE SALE**

generated from this event to your child's school.

Friends and family members are encouraged to help support this event.

**Mention your school when ordering!
Bring this flyer to Chuck E. Cheese.**

**Bring this flyer to Chuck E. Cheese for
10 FREE play points**

Limits 1 offer per child. Valid only on night of Fundraising Event. Activation of play card or band is not included. ©2023 CEC Ent. Conc. LP. All rights reserved.

FR Panel #0741

EVENT INFORMATION

LOCATION: **CHUCK E. CHEESE**

TIME: 3:00pm - 9:00pm

SCHOOL: Taku

EVENT DATE: Friday, April 12th, 2024

EVENT ADDRESS:

308 E Northern Lights Blvd, Anchorage, AK 99503

To find out more, check out chuckecheese.com

**120 PLAY
POINTS
FOR \$30**

EXPIRES 12/31/24

Limits one per check. Valid with coupon and only on night of Fundraising Event. Only at participating locations. Play card or band activation not included. Dine-in only. ©2023 CEC Ent. Conc. LP. All rights reserved.

**FR Panel #0915
CHUCK E.
CHEESE**

\$29⁹⁹

**1 Large (1 Topping) Pizza
4 Drinks**

EXPIRES 12/31/24

Limits one per check. Valid with coupon and only on night of Fundraising Event. Only at participating locations. Dine-in only. ©2023 CEC Ent. Conc. LP. All rights reserved.

**FR Panel #5906
CHUCK E.
CHEESE**

**DOWNLOAD THE
NEW APP
GET 500 FREE
E-TICKETS!**



EXPIRES 12/31/24

One time offer. Valid with first time registration. See chuckecheese.com for more details. ©2023 CEC Entertainment Concepts, LP. All rights reserved.

Sales include all food and merchandise purchased at the registers. Delivery & Carryout Orders placed directly at ChuckEcheese.com now also apply towards your fundraiser. You must add the item "School or Organization Fundraiser" to your cart before check-out and order from the location noted at right.

©2023 CEC Entertainment Concepts, LP. All rights reserved.

Taku Yearbook

**ORDER YOUR TAKU
YEARBOOK- NOW ON
SALE**

**2023-2024
\$15.00**

**USE THIS CODE FOR THE
PTA GIVEBACKS
WEBSITE.**

CREDIT OR DEBIT CARD NEEDED.



SCAN QR CODE

Taku Family,

That nostalgic time of year has come for your Taku Elementary student(s) to be the proud owner of the one and only Taku Elementary 2023-2024 Yearbook!

In a world where technology and online memories are stored in a computer or smartphone, let's go back to a time when we got to open a book and relive our school days instead of "logging on". There is something magical about the smell of a brand-new yearbook. The memories and photos can be enjoyed with a simple flip of a page. With laughter, those happy tearful moments, and core memories of a time when kids could be kids can be easily acquired through the old-fashioned mode of obtaining information book with a whole year's worth of your child's experience as a Taku Elementary Tiger, can be with you at home simply by scanning either the Taku PTA Cash App QR code or the PTA Givebacks QR code (PTA Giveback's website is formally the Taku PTA Memberhub).

The Taku Yearbooks this year are \$15.00. If you feel it in your heart or are able to donate a yearbook to a child that may not be able to financially obtain one, you may also do so by stating in the memo line of either Cash App or on Giveback's site that the payment is for a donation. The Taku PTA board members are so thrilled that we can provide these beautiful, extraordinary visual memories for your student.

We thank each and every one of you for providing the inspiration and guidance needed to raise these amazing students!

Sincerely,

Jennifer DeGidio- Taku PTA Secretary
and

Laurel Piscoya- Taku PTA President

New School Start Times 24-25



PLC Monday Schedule	Start Time	Release Time
Elementary	9 a.m.	2:30 p.m.
High	9:45 a.m.	3:15 p.m.
Middle (grades 6-8)	10:30 a.m.	4 p.m.


Tuesday-Friday Schedule	Start Time	Release Time
Elementary	8 a.m.	2:30 p.m.
High	8:45 a.m.	3:15 p.m.
Middle (grades 6-8)	9:30 a.m.	4 p.m.

In some cases, preschool, charter and alternative programs may have different schedules.

START PLANNING NOW

New start times may affect schedules outside of school. Consider how it could impact your family and start thinking through changes you may have to make.

- Before-school programs
- After-school programs
- Transportation to/from school
- Sports and activities
- Childcare
- Teen after-school jobs
- Parent/guardian work start or end times



Point your phone camera to this QR code and then click the link for more information on changing school start times.



Anchorage School District
Educating All Students for Success in Life

asdk12.org/schoolstarttimes

Anchorage CHILD CARE CONVERSATIONS

**** Child care & food provided! ****

Parents - are your child care costs reasonable for your family? Have you had to make difficult decisions to be able to find quality, safe, and affordable care for your kids?

Join the Anchorage Child Care and Early Education (ACCEE) Fund Implementation Team to give us your feedback about child care access in Anchorage and learn about the Fund and the ways it can help support families and businesses across the Municipality!



Tuesday, January 30

🕒 6 - 8 p.m.

📍 BP Energy Center,
1014 Energy Court, Birch Room

Sunday, February 18

🕒 7:30 - 9 p.m.

📍 Zoom. Register:
careforkidsanchorage.com/events

Tuesday, February 27

🕒 6 - 8 p.m.

📍 Eagle River Town Center
Community Room

Thursday, February 29

🕒 6:30 - 8:30 p.m.

📍 Girdwood Community Room
250 Egloff Drive, Girdwood

PARENTS, WE NEED YOUR FEEDBACK!

We want to hear from YOU about what is needed now in the child care sector and how we can use the funds to meet those needs in the short term while also looking down the line at Anchorage's child care sustainability far into the future.



www.careforkidsanchorage.com



Moving to Middle School



Starting in August 2024, all 10 ASD comprehensive middle schools will include grades 6-8.

- Begich • Clark • Gruening • Mears • Romig
- Central • Goldenvue • Hanshew • Mirror Lake • Wendler

Steller Secondary also will welcome sixth-grade students.

Students who attend their neighborhood elementary school and are going into sixth grade will attend middle school.

Aquarian Charter, Chugach Optional and Denali Montessori will keep their sixth-grade classrooms.

Start Planning Now

This adjustment may affect schedules outside of school, such as transportation, activities and afterschool programs. Consider how it could impact your family and start thinking through changes you have to make.

New opportunities and long-term benefits for students

Sixth-grade students in a middle school setting have the opportunity to receive:

- More options for core instruction
- Increased elective opportunities, including music, CTE and world languages
- Daily PE classes and participation in sports and activities
- Greater access to school counseling
- Increased daily instruction in social studies & science
- Availability of higher-level math, including algebra & geometry
- Access to middle school sports, clubs and activities



Point your phone camera to this QR code and then click the link for more information on the middle school move
asdk12.org/middlemerge



Anchorage School District
Educating All Students for Success in Life

Kindergarten Round-Up

Kindergarten Round-Up

Is your child starting kindergarten in the Anchorage School District in the 2024-25 school year?

Join us!

- Learn how to help prepare your child for kindergarten
- Activities to do at home to support kindergarten readiness
- Enrollment information and requirements
- Activities for children
- Meet the staff
- Tour the school

A full list of Kindergarten Round-Up dates at ASD elementary schools can be found on back of this flier.



Taku's Kindergarten round-up will be on April 24th from 2:40 pm - 3:25 pm. We hope to see you there!

Pre-School Programs

Anchorage School District

Neighborhood Preschool Programs

Apply
Online Now!

asdk12.org/preschool/gened



Program Details

- Children must be 4-years-old on or before September 1st of the current school year
- Families must live in the school zone of where the program is located (exceptions apply)
- Visit asdk12.org/preschool/gened to review eligibility and selection information
- Children attend 3 hours on Monday, 4 hours per day Tuesday through Friday and follow the ASD school year calendar



Benefits for Children

- Comprehensive program with focus on all areas of development: social and emotional, physical, language, cognitive, math, and literacy
- School readiness including social emotional skills, increased self-confidence, and positive relationships with others
- Family engagement including home visiting

ASD Preschool
907-742-4140
asdpreschool@asdk12.org



AK Reads Act Updates - Progression vs Non-Progression

Alaska Reads Act Requirements



Part of the Alaska Reads Act is identifying students who are 'well below' and who might need additional time and support to catch up.

Students in grades K-3rd who show that are in the well below category for the assessment, will be considered for non-progression or more commonly known as retention. This conversation will be introduced to families at February conferences. The conversation will include parents/guardians, teacher and principal. The family will make the final decision on whether or not their child will progress to the next grade level. The state is requiring districts to have families of 3rd grade students who are well below, sign a waiver with their decision around progression/non progression and agreeing to 20 hours a summer school.

Join our next PTA meeting!

We will be meeting in the Taku Library 4/9/24 at 5:30 pm! Please join us!

Support Your PTA!

We're calling on all parents, teachers, and supporters to join hands and support our school's initiatives. Your donation will go a long way in funding important programs, activities, and resources for our students. To make your contribution and help us reach our goals, please visit <http://takupta.memberhub.com> and donate today. Every dollar counts and helps us provide a brighter future for our students. Thank you for being a part of our dedicated PTA community!



Specialist News

Library with Amy Johnson

April @ Your Library

Curriculum

For April, the genre, or style of writing, of the month is Poetry. In addition, highlights of what students at specific grade levels will learn during April include the following:



- K- Exploring Mother Goose and other poetry titles; Book handling, care, selection; Library locations; Parts of book; Fiction versus nonfiction
- 1 - Exploring various titles, with discussion of elements of a story (main and supporting characters, setting, plot); Fiction versus nonfiction; Call numbers; Dewey Decimal System
- 2 - Book discussion with emphasis on characters and setting; Dewey Decimal System; Call numbers
- 3 - Book discussion with emphasis on comprehension, character, and theme
- 4 - Book discussion with emphasis on comprehension, character, and theme
- 5 - Book discussion with emphasis on comprehension, character, and theme
- 6 - Book discussion with emphasis on comprehension, character, and theme

Happy Spring!

Sincerely,

Amy Johnson, Taku Librarian

P.E. with Natalie Washington

Physical Education News:

Coming events:

- Healthy Futures log

- The last Healthy Futures log begins April 1st and is due May 1st.

Gym Shoes:

- Your student needs a clean, non-marking pair of gym shoes to leave at school.

- These are used for PE class to make sure they can participate safely and to keep our new gym floor clean!

Natalie Washington

Washington_natalie@asdk12.org



Important Dates



AK STAR Testing

AK STAR Testing for 3rd through 6th grade students begins on Monday, 3/25, and will continue through the following week 4/1 - 4/5.

Please ensure that your child(ren) gets a good night of rest each night, eats a healthy breakfast, and arrives at school on time each day.



Chuck E. Cheese FUNdraising Event - 4/12

Join us for an electrifying school fundraising event! Arcade games galore and pizza that'll make your taste buds dance! It's going to be a night packed with fun and community spirit! Don't miss out – see you there! 🥰



4/9 - PTA Meeting

Join us at the PTA meeting at 5:30 pm - 6:30 pm!

Donor Thank You

Great Alaska Pizza Company generously donates pizzas for our Students of the Month every month! The winners get to enjoy a pizza lunch with the principal in the office. Taku greatly appreciates Great Alaska Pizza Company's generosity and their delicious pizza.



★4/21-4/27 Administrative Professionals Week

Do something nice for our ladies in the front office .. Show them some love!

Student Handbook: https://www.asdk12.org/cms/lib/AK02207157/Centricity/Domain/1179/23-24_ES-Student-Handbook_Accessible.pdf

Volunteering at Taku

If you are interested in volunteering at Taku this upcoming year, please fill out the volunteer form ASAP. This must be done every school year. Parents who filled out the form last year will need to reapply.

https://docs.google.com/forms/d/e/1FAIpQLSft2SM758xCY0fkBu7cYj6vdYGO4RRJt7LFAqrCKaQD_HMwPMg/viewform

We encourage families to do this now, that way, as events, field trips and other volunteer opportunities arise you won't have to scramble last minute. The volunteer process includes a background check and can take up to 5 business days before ASD's Office of Equity approves or denies your application. Once we have received the approval/denial we will email you to let you know.



Taku Elementary

Email: takuattendance@asdk12.org

Website: <https://www.asdk12.org/taku>

Location: [701 East 72nd Avenue, Anchorage, AK, USA](#)

Phone: [907-742-5940](tel:907-742-5940)

Facebook: <https://www.facebook.com/taku365/>



Taku Elementary

Taku is using Smore to create beautiful newsletters

